

# Gift of Health

Our Philanthropy Magazine

## Inside

- 2** Renewal Campaign Celebrates 10-Year Anniversary
- 6** Honoring 15 Years – the Warren R. and Lauraine A. Hoensheid Cancer Center
- 8** Chapel Design Awards
- 10** Robust Inpatient Rehab
- 12** The Susan Weinstein Alberts Endowed Farming Fund
- 15** The Results Are In – Donor Survey
- 16** Opening of the Livonia Medical Center
- 18** St. Joseph Mercy Chelsea President Nancy Graebner-Sundling to Retire
- 20** Spiritual Care for Health Workers

for donors of  
Saint Joseph Mercy  
Health System

WINTER 2021

BeRemarkable.



## Living Healthier

Access to fresh, local food;  
hands-on education; and community garden –  
learn about The Farm at St. Joe's Oakland.

Story on page 12

# St. Joe's Celebrates the 10-Year Anniversary of the *Renewal Campaign* and Ongoing Impact

In fall of 2011, St. Joe's Ann Arbor celebrated 100 years of serving the community and the dedication of the new Patient Towers, the final project of an 11-year health system master plan. Philanthropic giving for these significant efforts through the *Renewal Campaign* transformed care with support for projects, some of which included:

- 2011 Patient Towers project that included the North and East inpatient towers, new hospital entrance, lobby and Chapel
- 2008 Helen and Marion S. DeWeese, MD, Surgery Pavilion
- 2006 Warren R. and Lauraine A. Hoensheid Cancer Center at St. Joe's Brighton

Philanthropic support for the campaign and our renewed spaces continues to make an impact, every day, on our ability to achieve clinical excellence and innovation, provide a remarkable patient experience, and to reach beyond the walls of the hospital to improve community health and well-being.

"Your giving continues to make a life-changing difference for patients. Some key elements of the Patient Towers project were adding inpatient rooms and making each larger with more space for in-room procedures and private bathrooms. This achieved the goal to provide our patients with comfort, dignity and a healing environment, and when COVID-19 swept through our community, it became critical to treatment and safety for our patients," shared David Vandenberg, MD, SFHM, Chief Medical Officer, St. Joseph Mercy Ann Arbor and Livingston.

"When I joined St. Joe's in 2016, the commitment of our community, physicians, leaders and colleagues was evident. Your pride in St. Joe's hospital is reflected in your philanthropic support and the investments you have made in the hospital's mission and vision. I am grateful to be a part of the St. Joe's community and look forward to our future," shared Alonzo Lewis, President, St. Joseph Mercy Ann Arbor and Livingston.



New Patient Towers  
completed in 2011



*“Being a part of St. Joe’s Renewal Campaign was especially meaningful to my family and me. The Sisters of Mercy, hospital leaders and staff, and the physicians are committed to compassion, innovation and making sure people have access to care. I remain grateful to all those who joined together to renew the hospital for our community,”* said Bill Holmes, who served as St. Joe’s Development Committee Chair at the time of the *Renewal Campaign*.

Howard Holmes and Sister Yvonne Gellise joined the community and hospital staff to break ground on St. Joe’s Hospital and bring the hospital to its current location in 1973.

## Patient Towers

St. Joseph Mercy Hospital was established by the Sisters of Mercy in 1911, in a house on State Street in downtown Ann Arbor that had been donated by a local resident. The Sisters continue to serve our hospital and our community. In 1914, the Sisters moved the hospital to Ingalls Street in Ann Arbor, and again, with the help of community support, to its current location in 1973. The Patient Towers project built on a shared commitment to meet the community’s growing needs and create a healing environment for patients and support advancements in medical and surgical care..

To learn about how ongoing support makes a difference, visit: [stjoeshealth.org/giving](http://stjoeshealth.org/giving)



1911 first St. Joe’s Hospital on State Street



Walter M. Whitehouse, Jr., MD; Bill Holmes; and Bryan Amann served as leaders of the *Renewal Campaign* and attended the launch at the 2005 Crane Event.

## New Entrance

The Patient Towers' new grand entrance and 1 North lobby created a welcoming environment for patients, visitors and staff to get lunch, coffee and sundries at Joe's Java or use our Inspirit Salon services, including specialized care for patients facing cancer. When crisis hit in 2020, a section of the entrance, featuring our tribute to a heritage of nursing education, served as a COVID-19 vaccination clinic for staff. The beautiful and meaningful location was fitting for our first glimpse of hope in the fight against the virus.



## Chapel

For countless patients, family members, visitors, and health care workers at St. Joe's, the Hospital's Chapel has served as a place of solace, comfort, inspiration and sanctuary. The spectacular and welcoming design invites people of all faiths to join together to pray, celebrate, and find respite.

*"Pat and I supported the Renewal Campaign to help continue a tradition of compassionate, quality, faith-based care that the Sisters of Mercy established. We have chosen St. Joe's for support and our care throughout the years. We know that St. Joe's is an important part of our community and feel good knowing we have had a part in renewing the hospital and supporting its mission,"*  
shared Tony Werderitsch, a lead donor to the *Renewal Campaign* with his wife, Pat.



**Our teams at St. Joe's joined in support and surpassed the *Road to Renewal Employee Campaign* goal of \$1.5 Million.**

## The Helen and Marion S. DeWeese, MD, Surgery Pavilion

The Helen and Marion S. DeWeese, MD, Surgery Pavilion preceded the Patient Towers as a key component of the *Renewal Campaign*. Completed in 2008, the state-of-the-art design supports patient-centered care and traditional, minimally invasive and robotic-assisted procedures used in surgical care today.

*“We are so proud to see the ongoing impact of the surgery pavilion and to know that through our giving in support of the Renewal Campaign, we are helping to carry on my parents’ legacy at St. Joe’s and in our community. During their lifetime, my dad served as an excellent leader and surgeon at St. Joe’s and my mom served as a dedicated surgical nurse for the University of Michigan as well as supporting my dad in his work. It was so meaningful to my family to name the surgery pavilion for my parents, to honor their commitment to patients, and make a difference for future generations,”*

shared Dawn Holmes, lead donor to the *Renewal Campaign* with her husband, Dudley.



Helen DeWeese (1916-2012) with Dawn and Dudley Holmes and family at the 2008 dedication of The Helen and Marion S. DeWeese, MD, Surgery Pavilion.

*“It was an honor to be among those leading on the development of the new Helen and Marion S. DeWeese, MD, Surgery Pavilion and to join together with fellow physicians, colleagues and community members through the Renewal Campaign. Gifts for the campaign allowed us to elevate St. Joe’s surgical care with a leading-edge facility – one focused on safety, an optimal work environment, surgical excellence and patient-centered care,”* shared Walter M. Whitehouse, Jr., MD, former St. Joe’s Chair of Surgery and Major Gifts Committee Co-chair at the time of the *Renewal Campaign*.

*Continued on page 21 ...*

# St. Joe's Brighton Honors the 15th Anniversary Warren R. and Lauraine A. Hoensheid Cancer Center



Spring 2021 marked the 15th anniversary of our Warren R. and Lauraine A. Hoensheid Cancer Center at St. Joe's Brighton. The project was a key component of the health system's *Renewal Campaign* and giving in support of the project exceeded the \$5 million fundraising goal. Your support allowed St. Joe's to open the first full-service cancer center in Livingston County in 2006.

"Your ongoing commitment makes it possible to continually improve upon advanced treatments, robust research, innovative support, and compassionate care for area patients, making a difference every day," shared John O'Malley, FACHE, President, St. Joseph Mercy Livingston. "Today, we remain committed to cancer care excellence and to ensuring patients feel heard, safe and embraced on every step of their cancer journey."

In a recent letter to donors of the Warren R. and Lauraine A. Hoensheid Cancer Center, O'Malley shared some updates about how investments in cancer care have a direct impact on patients and our community. We are pleased to share the following highlights with you. "This is a reflection of the lasting power of philanthropy and how your partnership in our healing mission makes an impact," stated O'Malley.

## **Your investment has led to expanded and improved cancer treatments at St. Joseph Mercy Brighton's Warren R. and Lauraine A. Hoensheid Cancer Center.**

- Your giving has made a difference for our patients who needed 36,000 expert, personalized radiation oncology visits over the past five years, 1,700 new patients turned to us for radiation treatments that are often provided daily for 5-8 weeks. Care close to home in a familiar and healing setting eases the experience for our patients.
- In 2018, we improved care for patients with the investment of a new Varian TrueBeam® linear accelerator (LINAC) machine. Delivering high energy radiation (x-rays) customized to a tumor's shape, which includes a fully-integrated system for image-guided radiotherapy and radiosurgery to treat cancer in areas such as the lung, breast, prostate and head and neck.

- We use the most advanced radiation treatment planning algorithms including Multi-Criteria Optimization, which maximizes tumor control and minimizes doses of radiation delivered to normal tissue and we have invested in the use of machine learning to help design radiation treatments for prostate cancer patients.
- Your generosity has also touched the lives of more than 24,000 new patients who turned to our Hoensheid Cancer Center for more than 46,000 chemotherapy and infusion visits in the past 5 years. Providing a healing environment for advanced care, locally, is meaningful for patients going through intense chemotherapy treatments for weeks.

**Your commitment to healing body, mind and spirit has supported innovative approaches to serving our patients.**

- All newly diagnosed patients now benefit from our Nurse Navigator services, which recently expanded beyond our breast and lung cancer programs. Our Nurse Navigators are a patient's personal guide from education, to pastoral care, to resources like transportation and support groups, to coordination of appointments across our integrated team of cancer and clinical experts such as oncology, radiation oncology, surgery, social work and dietary. Since 2019, more than 12,400 patients benefitted from our Nurse Navigator services across Saint Joseph Mercy Health System

**You have been a partner in the future of cancer care.**

- Investment in our robust oncology research program has allowed us to designate two full-time research experts on site at our Hoensheid Cancer Center for our Livingston area patients, making emerging new options for care available close to home, and reducing risks and costs of traveling to participate in national trials. We take pride in being part of St. Joe's Michigan Cancer Research Consortium (MCRC), one of only 32 National Cancer Institute Community Oncology Research Programs (NCORP) in the country. Together, we offer patients local access to over 100 trials through leading pharmaceutical companies and The National Cancer Institute, offering promising surgical, radiation, immunotherapy, targeted therapy, chemotherapy, symptom management, prevention and screening options.

*Continued on page 23 ...*



Donors and health system leaders cut the ribbon at the 2006 dedication event.

## Donors Make Award-winning Chapel and Spiritual Healing Possible



September 2021 marked three years since the doors first opened to our new Chapel at St. Mary Mercy Livonia, revealing its healing environment and award-winning design. As you may recall from previous newsletter articles, the unique building was funded with generous philanthropic support and designed around a single vision statement.

While COVID-19 required our focus for much of the past nearly two years, today, we return to an article we first began in 2019 to thank our donors and share the news of the Chapel's six 2019 architecture and design awards.

"We know that our donors take as much pride in the Chapel as we do and that their investment in this healing environment is the reason that our Chapel has an award-winning design that reflects our shared commitment to faith-based, compassionate care that heals body, mind and spirit," shared Karen Campbell, Gift Officer, St. Mary Mercy Livonia.

### St. Mary Mercy Livonia Chapel

#### Winner of Six Architecture and Design Awards

Thank you to our donors and funders for your investment and for sharing our vision with your support of our Chapel *Renewal Campaign*. Awards received included:

**Michigan Masonry/AIA Award**

**AIA Michigan Honor Award**

**AIA Michigan People's Choice Award**

**SARA NY Council Design Excellence Award**

**Faith and Form/AIA National Design Award**

**AIA Detroit Honor Award**

We are proud to circle back to share the news of the 2019 awards. Ply+ designed the St. Mary Chapel with the input of Fr. Gilbert Sunghera, S.J., a Liturgical Space Consultant from University of Detroit Mercy and the chapel design committee.



## Chapel Vision Statement

If this chapel does nothing else, it should ... serve as a beacon of hope and peace within a quiet and prayerful environment to promote spiritual and emotional healing and facilitate personal and communal encounters with the presence of God through reflecting the beauty of light, nature, and our religious heritage.



### **Spirituality: Life's Meaning and Purpose**

"We are grateful to the generous community members, colleagues and physicians who came together in support of our \$2-million Chapel renewal and helped achieve the vision that Sr. Modesta and our design committee had for this sacred space. The Chapel serves hundreds of people each year and is integral in their spiritual, social and emotional health," shared David Spivey, President, St. Mary Mercy Livonia.

At St. Mary Mercy Livonia, we understand spirituality as a person's desires or expectations about what gives life meaning and purpose.

"Our commitment to spiritual healing is reflected in the design of the chapel. One of my favorite aspects is the dichroic window that allows light to filter through in a peaceful and calming way and is symbolic of finding the light in dark times," said Michael Hoyt, Mission Leader, St. Mary Mercy Livonia.

The chapel along with our chaplain services have been a key part of providing compassion, connection and comfort throughout the challenges of COVID-19, including providing closed-circuit chapel services and Mass within patient rooms; visits with chaplains; and when it was safe, reopening our chapel for the respite of our teams and community.

Today, the Chapel continues to provide a beacon of hope. Daily Mass and scheduled services have been reinstated, and it is open for quiet, reflection and renewal.

"The Chapel design honors our Catholic heritage and provides a welcoming, prayerful place for our community. We also created a sacred prayer space for our Muslim brothers and sisters, as well as a non-denominational mediation space," added Hoyt. "The Chapel and adjoining sacred spaces truly lift our mission to serve as a transforming healing presence within our communities."

When the chapel opened, Felician Sister Mary Modesta Piwowar commented, *"The new Chapel will be the heart and center of St. Mary Mercy Livonia since our loving God will dwell in it to bestow and pour out his graces and blessings on our community."* Sister Modesta was Honorary Campaign Chair.

*"I supported the Chapel to show gratitude to the Felician Sisters who founded the hospital, to serve those who attend daily Mass, and as an investment in St. Mary's Catholic heritage and faith-based care,"*

**shared Bob Mazur, Chapel Campaign Chair.**

**For more information about how your giving can make a difference at St. Mary Mercy Livonia contact: Karen Campbell, Gift Officer, at 734-655-2876, or [Karen.Campbell@stjoeshealth.org](mailto:Karen.Campbell@stjoeshealth.org), or Melissa Sheppard, Director of Corporate and Foundation Relations, at 734-712-4079 or [Melissa.Sheppard@stjoeshealth.org](mailto:Melissa.Sheppard@stjoeshealth.org). Or visit: [stjoeshealth.org/giving](https://stjoeshealth.org/giving)**

# The Inpatient Rehab Expansion Celebrates One Year

In September, St. Joe's Chelsea celebrated the one-year anniversary of the 24-bed Inpatient Rehab expansion, which works closely with the Michigan Medicine program. On the unit, we provide a caring, focused environment to maximize each patient's functional ability after hospitalization. Inpatient Rehab is beneficial for individuals recovering from stroke, brain injury, amputation, major trauma, neurological disorders or complicated medical conditions with rehab needs.

“When donors invest in St. Joe's Chelsea, they are investing not only in the most advanced medicine and healing environment, but also in the patients and communities we serve. The new Inpatient Rehab Unit has seen a rapid increase in census, including days when all 24 beds are filled, demonstrating the magnitude of impact it is making,” shared Jennifer Maisch, Director of Major Gifts, St. Joseph Mercy Chelsea. “Accomplishments like this are a stellar example of why our donors take pride in St. Joe's Chelsea.”

## Benefits for Patients:

- A highly educated, interdisciplinary team of skilled professionals
- Intensive specialized therapy services including occupational therapy, physical therapy and speech language pathology
- A spacious rehabilitation gym where the team works together with the patient and their family to meet milestones necessary to safely return to the community
- Daily medical supervision by a team of physicians from Michigan Medicine specialized in rehabilitation
- Regular consultations from other physicians to support the patient's medical needs
- A hospital nationally recognized for quality of care and patient satisfaction
- A low nurse to patient ratio with specialized rehabilitation nurses focusing on comprehensive care 24 hours per day

When you invest in St. Joe's . . .




ST. JOSEPH MERCY  
CHelsea

## INPATIENT REHAB EXPANSION ONE YEAR ANNIVERSARY

 **BEDS**  
EXPANDED FROM  
**6 TO 24**

 **330**  
NUMBER OF PATIENTS  
SERVED (9/20 - 8/21)

NUMBER OF NEW STAFF  
**64**  **25** THERAPY STAFF  
 **21** NURSES  
TOTAL  **18** PCAS

 NUMBER OF  
PATIENT DAYS  
IN AUG  
**500** 2021

AVERAGE DAILY CENSUS  
SEPT 2020 **4.8**  **16.7** AUG 2021  
   

**75%**   
PERCENTAGE  
OF PATIENTS  
DISCHARGED HOME

*“As a result of the joint venture agreement between Michigan Medicine and St. Joe’s Chelsea, we’ve expanded our inpatient rehab footprint in the region and plan to continue to grow to provide high quality rehabilitation care to patients in the state who have sustained catastrophic injury or a life-changing diagnosis,” said John Danko, DO, Medical Director of Inpatient Rehabilitation. “We have done phenomenal work over the past year as evidenced by the outcomes we have had and the satisfaction of our trainees, teams and, most importantly, our patients. This partnership is a testament to our commitment to high quality rehabilitation care and improving the quality of life of those most in need.”*

For more information about how you can make a difference at St. Joseph Mercy Chelsea, contact Jennifer Maisch, Director of Major Gifts, at 734-593-5373 or [Jennifer.Maisch@stjoeshealth.org](mailto:Jennifer.Maisch@stjoeshealth.org), or Melissa Sheppard, Director of Corporate and Foundation Relations, at 734-712-4079 or [Melissa.Sheppard@stjoeshealth.org](mailto:Melissa.Sheppard@stjoeshealth.org). Or visit: [stjoeshealth.org/giving](http://stjoeshealth.org/giving)

# Six-figure Gift Establishes The Susan Weinstein Alberts Endowed Farming Fund



This past August, Ross Weinstein, MD, made a significant gift to establish The Susan Weinstein Alberts Endowed Farming Fund. Dr. Weinstein was among the first donors whose giving helped launch The Farm at St. Joe's Oakland and this gift to honor his sister builds on years of support to The Farm and other important programs including the Emergency Department.

In a recent interview, Dr. Weinstein shared, "I was first inspired to support The Farm in part due to my interest in gardening. In the past, I enjoyed showing my 41-bed garden on the local home and garden tours. In the English Garden tradition, I bred and grew flowers that bloomed sequentially, but my favorites have always been lilies. So now, when I visit St. Joe's, it is a good time to walk through The Farm and see the vegetable and flower gardens thriving."

When Dr. Weinstein learned about ongoing plans for The Farm at St. Joe's Oakland and how the innovative program would serve the community, he chose to continue his support through a meaningful named endowment to honor his sister. "My sister was very accomplished. During her lifetime, she was dedicated to the healthy development of children and was always interested in initiatives that improved the community," added Dr. Weinstein. "She also loved nature. I think she would have been really thrilled by The Farm and this endowment in her name. The Farm brings the community together and it helps people, and she would have valued that."

Dr. Weinstein, who is a retired physician, spent more than three decades as an emergency medicine specialist. Dr. Weinstein shared that it is fulfilling to continue making an impact at St. Joe's through his giving.

During visits to the hospital, he has witnessed how The Farm is making a difference for physicians, nurses and staff who can pick flowers for their office or take home some fresh vegetables. Dr. Weinstein added, "The Farm also helps to make the hospital stay a little brighter for patients through the bouquet program and it is helping to provide food assistance to those in need. When I see all the good The Farm is doing, I hope my gift will encourage others to give in support."

"We are so grateful to Dr. Weinstein and those making philanthropic commitments to The Farm. There is a great deal of energy around this project," shared Shannon Striebich, President of St. Joseph Mercy Oakland and Senior Vice President of Operations for Trinity Health Michigan.

## Growing and Thriving

Your giving helped make our first full growing season at The Farm at St. Joe's Oakland a success! Our expanded vegetable gardens and partnerships with local farms allowed for more robust programming. Through our Produce-to-Patients program, we donated more than 3,000 pounds of produce to patients at The Mercy Women's Center and Outpatient Rehabilitation Clinic. You helped families gain food security through our Farm Share assistance program, providing them with a weekly box or bag of fresh, local produce for 20 weeks. The Farm has also become more integrated with the hospital, there is now an onsite Farm office where patients can visit for quick assessment and connection to food assistance resources. In addition to our community, our frontline colleagues have benefited from the beautiful, soothing atmosphere for breaks, as well as positive, fulfilling, and therapeutic gardening activities.

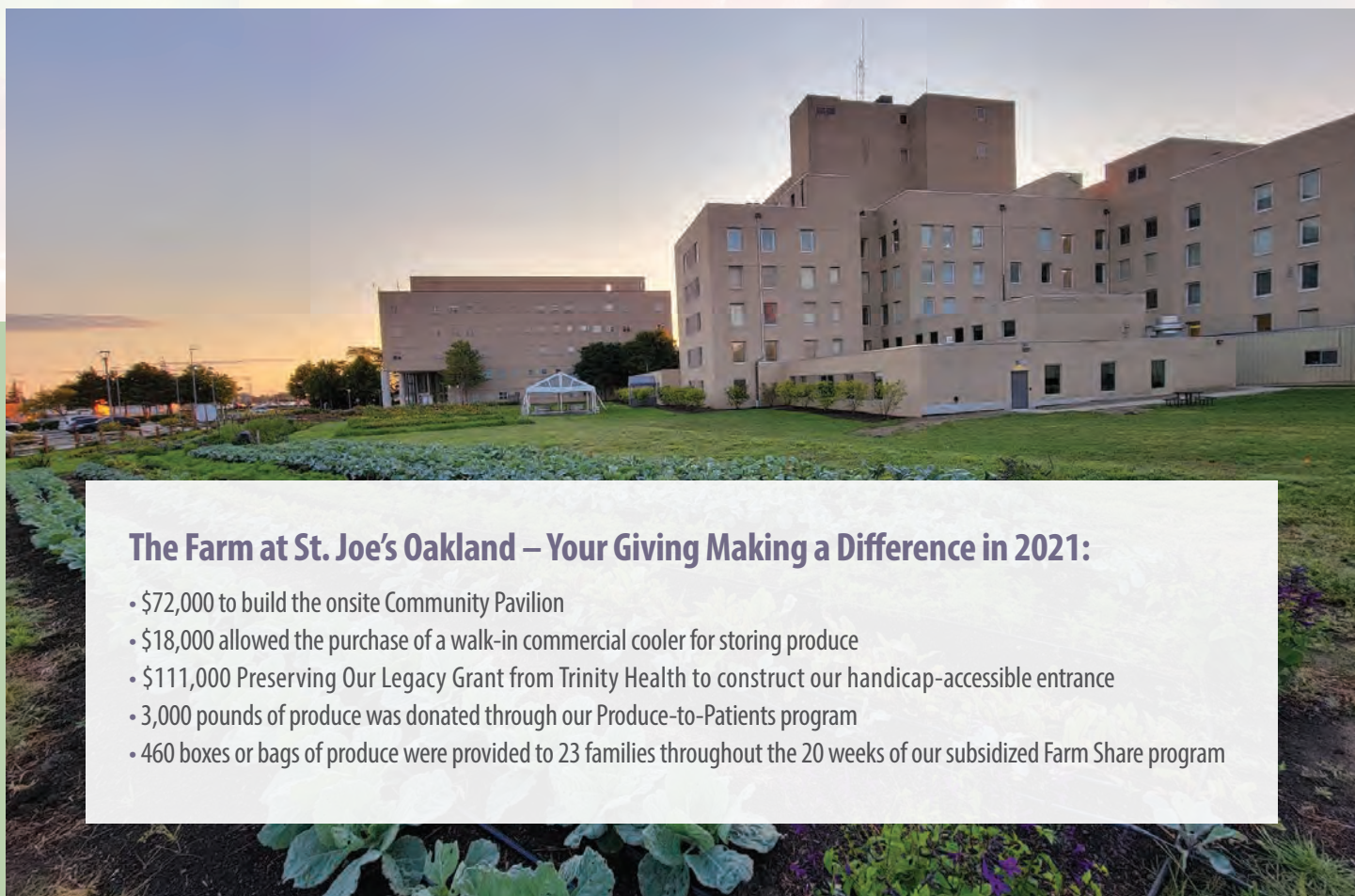
“It is inspiring to see The Farm blend with the hospital and community,” said Amanda Sweetman, Director of Farming and Healthy Lifestyles at Trinity Health Michigan. “Philanthropic support like Dr. Weinstein’s generous gift is essential to adding foundational elements and expanding programming, so that we can proactively engage our diverse community and help everyone join together on the path toward better health.”

At St Joe’s, our mission calls us to be a transforming healing presence in the communities we serve. St. Joe's Oakland is located in Pontiac, where the average life expectancy rate is 65.7 years compared to 83.5 years on average for the remainder of the county. This discrepancy is in part due to the fact that Pontiac has an 18% higher rate of poverty than the state average. In Pontiac, 13% of residents also identify as food insecure and the area lacks local markets for fresh produce. The Farm is one part of the hospital’s work to address these disparities.

“The Farm at St. Joe's Oakland is part of the solution. We know food insecurity and lack of access to fresh nutritious foods and outdoor activity have devastating effects on the health, livelihood, and life expectancy of area residents. Through generous support of The Farm, donors are supporting immediate and long-lasting solutions,” added Striebich.

"At St. Joe's we understand that food is medicine," Sweetman shared, “By exposing patients, doctors, and the communities we serve to fresh, accessible produce, we encourage healthier living and empower them to prevent future illness.”

Other achievements at The Farm at St. Joe’s Oakland include the hiring of a designated program manager for Katelyn Smoger, and implementing a robust volunteer program. The Farm has benefitted greatly from dedicated volunteers who come each week.



### **The Farm at St. Joe’s Oakland – Your Giving Making a Difference in 2021:**

- \$72,000 to build the onsite Community Pavilion
- \$18,000 allowed the purchase of a walk-in commercial cooler for storing produce
- \$111,000 Preserving Our Legacy Grant from Trinity Health to construct our handicap-accessible entrance
- 3,000 pounds of produce was donated through our Produce-to-Patients program
- 460 boxes or bags of produce were provided to 23 families throughout the 20 weeks of our subsidized Farm Share program

The team at United Wholesale Mortgage (UWM) is among the weekly volunteers. “At UWM, our commitment to support the community where we live and work is a top priority,” said Laura Lawson, Chief People Officer at UWM, regarding the organization’s volunteer support. “The Farm at St. Joe Oakland’s mission and goals resonate deeply with UWM team members, and it’s been humbling having the opportunity to volunteer to create a positive experience for patients, while also helping put food on the table for the local community.”

“We have an amazing vision for The Farm and are fortunate to see a strong community network beginning to form,” added Sweetman. There are many ways philanthropic giving can make an impact in support of The Farm at St. Joe's Oakland, some future plans include:

- Adding lights and handicap-accessible tables and chairs in the Pavilion – a gathering space at The Farm
- Renovating the current storage space to serve as a Food Hub for sorting, washing and packaging produce; housing a commercial-grade cooler to store and preserve produce; and storing tools and equipment
- Constructing a hoop house to grow food, even in colder months
- Funding our Internship Program to help reduce disparities for students



## More Excitement for The Farm at St. Joe’s Oakland

Thank you to the team at Ford Motor Company and their partner Imagination for inviting The Farm at St. Joe's Oakland to participate in Ford's outdoor Motor Bella showcase this year. The event took place September 23-26. Ford's partner Michigan Regional Council of Carpenters and Millwrights used the onboard power of one of Ford's newest trucks to build our hospital-based farm a number of planter boxes, wheelchair-accessible raised bed, and work tables. On behalf of all of our patients and those that will benefit from these in-kind contributions, thank you.

To learn more about how you can make a difference in support of The Farm at St. Joe's, visit [stjoesfarm.org](http://stjoesfarm.org) or contact:

- Craig Peiser, Director of Major Gifts, at 248-858-6142 or [Craig.Peiser@stjoeshealth.org](mailto:Craig.Peiser@stjoeshealth.org)
- Jill Schubiner, Gift Officer, at 248-858-6146 or [Jill.Schubiner@stjoeshealth.org](mailto:Jill.Schubiner@stjoeshealth.org)
- Melissa Sheppard, Director of Corporate and Foundation Relations, at 734-712-4079 or [Melissa.Sheppard@stjoeshealth.org](mailto:Melissa.Sheppard@stjoeshealth.org)

Or visit: [stjoeshealth.org/giving](http://stjoeshealth.org/giving)

# You Make all the Difference

In August 2021, St. Joe's Office of Development mailed an engagement survey to more than 6,400 individuals, corporations and foundations who support our hospitals and services through philanthropy. We are extremely grateful to all those who responded.

"Thank you for taking the time to respond to our survey. We appreciate hearing from you," shared David Ripple, Regional Vice President for Development, SJMHS. "Your valuable insights will help our team create the best possible experience for those who give to St. Joe's."

We are pleased to share a few key highlights from the survey results as of October 25, 2021, and we look forward to engaging with you more in the future:

- Your pride in us makes a difference. When asked to state their top two reasons for giving, respondents resoundingly answered: pride in St. Joe's and gratitude for the care they received. 42.6% of donors selected, "I am proud of my association with the hospital and its mission," and 41.7% selected, "I am grateful for the care I received."
- We are grateful for your trust in us. While many supporters have a personal connection to or alignment with a specific hospital program or medical field, when respondents were asked to select the top two areas they were most interested in supporting, the highest percentage, 43.6% chose, "Where my gift is most needed, as determined by the hospital president."
- We value our relationship with you and are excited to continue building on a meaningful giving experience for you. When we asked respondents to select the top two most important aspects of the donor experience, 47.68% responded, "Information as to how my gift was used," and 36% responded, "Communication regarding news and happenings at the hospital."

Thank you for all you do to help St. Joe's build on clinical excellence, improve community health and wellbeing, and provide a remarkable patient experience.

*If you would like to learn more, please contact Chelsea Rupert, Director of Donor Experience, at 734-712-2898 or [Chelsea.Rupert@stjoeshealth.org](mailto:Chelsea.Rupert@stjoeshealth.org). Or visit: [stjoeshealth.org/giving](https://stjoeshealth.org/giving)*



# Saint Joseph Mercy Health System and IHA Livonia Medical Center opens on Schoolcraft College campus

Saint Joseph Mercy Health System and IHA's new 124,000-square-foot Livonia Medical Center located on the campus of Schoolcraft College opened in April 2021. At this new, state-of-the-art location, St. Joe's and IHA are bringing together leading health care providers and services to offer a continuum of care under one roof to Livonia and the surrounding communities.

"The Livonia Medical Center, positioned right in the middle of our southeast Michigan region, will bring IHA physicians closer to this community, providing seamless care across our physician offices, outpatient facilities and hospitals," said Rob Casalou, President and CEO, Trinity Health Michigan. "We have been working to bring health care out into the community where people live, work and play, and this medical center located on the Schoolcraft College campus is a great example of that successful effort."

St. Joe's Medical Group (SJMG) Sports Medicine was the first practice to move in, followed by IHA Livonia Primary Care. The IHA Urgent Care, previously located within the Jeffress Center on campus has also relocated to the new building and is open seven days a week, Monday through Friday, 8 a.m. to 8 p.m. and Saturday and Sunday, from 8 a.m. to 4 p.m., including holidays.

## **Additional practices and services include:**

- IHA Orthopaedics
- IHA Podiatry
- Probility Physical Therapy
- IHA Plastic & Reconstructive Surgery
- IHA Obstetrics & Gynecology
- IHA Nurse Midwives
- IHA Hand Surgery
- Women's Specialty Imaging – Digital Mammography, Breast Ultrasound, 3D Tomography and Bone Density Scans
- Diagnostic Imaging - MRI, CT, Ultrasound and X-ray
- IHA Livonia Pediatrics
- Michigan Brain & Spine Institute
- IHA Rheumatology
- IHA Urology
- IHA Vascular & Endovascular Surgery
- Lab Services
- Associates in Physical Medicine and Rehabilitation
- Retail Pharmacy
- Ambulatory Surgical Center

"This expansive center includes primary, specialty, and urgent care; as well as ancillary and advanced imaging services including MRI, ultrasound, and mammography," said Jason Harris, Vice President of Planning and Development for IHA. "Coming together with St. Joe's as part of one health care family, we are dedicated to providing greater access to care with lower cost and higher value for patients in the communities we serve."

An ambulatory surgery center opened its doors inside the medical center to provide outpatient procedures, such as orthopedic and general surgeries, with the ability for overnight stays if necessary. In addition, a full-service retail pharmacy supports the surgical suite, urgent care, and physician offices as well as the entire local community. Onsite amenities, including a coffee shop, creates a comfortable waiting area for patients and their families.





Schoolcraft College currently has majors and programs in nursing, pharmacy, health information technology, and medical assisting among many choices. The college's plans to launch an advanced imaging program for radiation technology students coincided with the opening of the new medical facility.

"We're very pleased to see the Livonia Medical Center come online and extend a hearty welcome to our campus," said Dr. Glenn Cerny, President of Schoolcraft College. "Having the many specialty practices located in a convenient and familiar location is a tremendous asset for our community. We're also excited that our new Health Sciences Center is just across the street, creating a great opportunity for many of our students in our health care-related programs to literally go from classroom to a vital, in-demand job and fulfilling career."

Additionally, as part of the ongoing collaboration between Schoolcraft College and Saint Joseph Mercy Health System, the St. Joe's Mercy Elite Sports Center on campus opened earlier this year. The 74,000-square-foot multi-purpose space includes eight volleyball courts, a running track, soccer training space and fitness and rehabilitation space. Mercy Elite provides physical therapy, strength and conditioning and fitness training for all interested schools, clubs, teams or individuals. Also sharing the space is a state-of-the-art fitness laboratory, classroom space and faculty offices for Schoolcraft College's Associate Degree program in Movement Science.

"These investments in our community ensure those who live and work here have the most advanced, coordinated and compassionate care as well as leading-edge and innovative services," shared David Spivey, President, St. Mary Mercy Livonia. "We are grateful for the partnerships, leadership and community support that make vital initiatives possible."

For more information or to reach someone to schedule an appointment, please visit [LivoniaMedicalCenter.org](http://LivoniaMedicalCenter.org). For information about St. Mary Mercy Livonia, visit [stjoeshealth.org](http://stjoeshealth.org).

*If you would like to learn more about how you can invest in St. Mary Mercy Livonia and the communities we serve, contact Karen Campbell, Gift Officer, at 734-655-2876, or [Karen.Campbell@stjoeshealth.org](mailto:Karen.Campbell@stjoeshealth.org), or Melissa Sheppard, Director of Corporate and Foundation Relations, at 734-712-4079, or [Melissa.Sheppard@stjoeshealth.org](mailto:Melissa.Sheppard@stjoeshealth.org). Or visit: [stjoeshealth.org/giving](http://stjoeshealth.org/giving)*

# St. Joseph Mercy Chelsea Announces Retirement of President, Nancy Graebner-Sundling in March 2022

After a decade of transformational leadership that has reshaped St. Joseph Mercy Chelsea and the community, hospital President Nancy Graebner-Sundling announced that she plans to retire in March of next year, capping a 48-year career in health care.



Since her appointment in 2012, Nancy has led several historic enhancements that significantly improved services for Chelsea and the surrounding communities. The hospital also has amassed national awards from Press Ganey, Leapfrog safety rankings, CMS Five Star, Healthgrades, Newsweek and IBM Watson during her tenure.

“We are grateful for the level of success that Nancy and her team have achieved at St. Joseph Mercy Chelsea over the years,” said Rob Casalou, President and CEO, Trinity Health Michigan & Southeast Regions. “Nancy has provided steadfast leadership during periods of tremendous growth and enormous challenges.”

A central accomplishment was the negotiation and implementation of a joint venture agreement with Michigan Medicine in 2018. “Nancy was instrumental in forging our successful joint venture to expand access to services in Chelsea and surrounding communities,” said Jeff Desmond, MD, Chelsea JV Board President, Chief Medical Officer, Associate Professor, Department of Emergency Medicine, University of Michigan Health. “Her passion for excellence and profound compassion for patients and the entire community of Chelsea will leave a lasting impact.”

During her time as president, Nancy has been a steward of philanthropic giving for key projects and services. Nancy partnered with community volunteers Carole and Howdy Holmes, who chaired the successful *Branching Out Campaign*, working with the committee to raise more than \$6 million and surpass the fundraising goal to build the hospital’s comprehensive Cancer Center. Additionally, during her tenure, philanthropic and volunteer supporters came together around key projects such as renovating and modernizing the Behavioral Health Inpatient Unit, and expanding breast imaging services, the SRSLY program, and the walking paths that connect the hospital campus and community.

# Nancy Graebner-Sundling

“I am so grateful to our community, physicians and colleagues who have joined our philanthropic efforts. Being a part of the St. Joseph Mercy Chelsea community and living out our mission together has been inspiring and I know our achievements will have a lasting impact,” shared Nancy Graebner-Sundling, President, St. Joseph Mercy Chelsea.

During her time as president, Nancy has led the completion of a two-story Atrium facility expansion that enhanced the Emergency Department and enabled expanded therapies, diagnostic imaging departments, renovation of the lab, pharmacy and sleep center. That was followed by the expansion of the surgical department, growing inpatient rehab capabilities, and adding the Michigan Medicine Hospitalist Service, which made it possible to treat higher acuity patients. Recently, the short stay unit was renovated at the Courtyard East patient care unit and the hospital is establishing a 24/7 urgent care unit in the Emergency Department.

“It has been the honor of my life to be part of a decade of remarkable growth for our hospital, with every action focused on improving the quality of patient care,” said Graebner-Sundling. “As a team, we have worked together to open up more services people need close to home — all in a comfortable, beautiful campus setting.”

“Nancy’s positive approach and consistent strength in adapting to a remarkably high pace of change in caring for those we serve will stand as the benchmark for years to come. From pandemics to organizational responsibilities to joint ventures – her emphasis on meeting the needs of colleagues and patients sets her apart,” said Jason Lindauer, Chelsea Local Board President, Senior Vice President, Wealth Management Advisor, The Lindauer Group, Merrill Lynch, Pierce, Fenner & Smith Inc. “Throughout her tenure, Nancy’s extraordinary ability to consider the input of all concerned led to the betterment of the hospital and community.”

A respected leader in Chelsea, Graebner-Sundling has served on the boards of Washtenaw County Community Mental Health, Chelsea State Bank, Chelsea Senior Center, St. Louis Center Residential Facility, Five Healthy Towns Foundation, Chelsea Chamber of Commerce and she served many more organizations. In recognition of her hospital leadership and service to the community, in 2020 she was named Chelsea Citizen of the Year by the Chelsea Chamber of Commerce, and Chelsea State Bank Woman of the Year.

A succession planning process has been initiated to ensure a seamless transition of leadership. We hope that you will join us in congratulating Nancy and wishing her all the best in her retirement.

# ALL God's Children: Spiritual Care and Support for Colleagues

With a grant from the Henry Luce Foundation distributed through The Chaplaincy Innovation Lab, based at Brandeis University, St. Joseph Mercy Ann Arbor has implemented a pilot program, ALL God's Children: Spiritual Care and Support for Colleagues. The program is offered to our teams that provide essential hospital functions including Environmental and Food Services, Transportation and Security. It addresses the challenges caused by the pandemic such as economic instability and the daily stressors and risks of serving as a frontline health worker during an ongoing, global health crisis.

“The program focuses on our colleagues who make lifesaving contributions to the health, safety, and well-being of patients by serving in essential roles,” shared David Nantais, Director of Mission Integration, SJMHS. “It is important for us to focus on providing our colleagues with better resources and supports to address the burdens of COVID-19 at work and at home.”

The program focuses on providing individualized education and resources, as well as opportunities for the teams to come together for support, key elements include:

- **Spiritual support through intentional chaplain rounding and visits to team huddle meetings**
- **Snacks and meals for teams while working**
- **Customized YouTube videos offering tools and strategies for building and maintaining resilience in difficult and stressful times**
- **Handout materials and “resilience bags” with information, tools, and resources for building resilience**
- **Free Farm Share memberships, which includes a weekly box or bag of fresh, local produce for 12 weeks, as well as complimentary produce in break rooms for individuals at work**
- **Non-slip, comfortable shoes for the Food Service staff**
- **Referrals and assistance for obtaining services both within and outside of St. Joe’s**
- **Individual chaplain-provided spiritual care**

“We are incredibly grateful to the Henry Luce Foundation and The Chaplaincy Innovation Lab, based at Brandeis University, for supporting this unique pilot program to help care for our colleagues,” shared Alonzo Lewis, President, St. Joseph Mercy Ann Arbor and Livingston. “This grant builds on our commitment to our teams and will make a difference in our colleagues’ daily lives.”

Thank you to all our philanthropic supporters who care so deeply about our colleagues at St. Joe’s and help build on our programming for colleagues. Your giving fully funded the COVID-19 Colleague Emergency Assistance Program (CEAP), which ran from April 2020 through June 2021. CEAP served more than 500 colleagues impacted by the pandemic by covering essentials such as rent and house payments, childcare, and medical bills. Giving made it possible to enhance our food assistance programs at The Farm at St. Joe’s. Additionally, the health system directed resources toward our Employee Assistance Program. A shared commitment to our colleagues helps to sustain our mission.

*Continued from page 5...* St. Joe's Celebrates the 10-Year Anniversary of the *Renewal Campaign* and Ongoing Impact

*"The DeWeese Surgery Pavilion made an impact on our capabilities; the satisfaction of our physicians, nurses and team; and allows us to provide a remarkable patient experience,"* shared John C. Eggenberger, MD, FASCRS, FACS, St. Joe's Chair of Surgery.

### ***Renewal Campaign Culmination***

On September 25, 2011, hundreds of St. Joe's friends, leaders and physicians gathered at the Centennial Celebration honoring St. Joe's and celebrating 100 years of serving the community and the completion of the *Renewal Campaign*.

*"Today, St. Joe's remains grateful to all those who helped make this renewal possible and to sustain our healing mission,"* shared David W. Ripple, Regional Vice President for Development, Saint Joseph Mercy Health System.



Among those in attendance at the 2011 Centennial Event were Rob Casalou, who served as President of St. Joe's Ann Arbor at the time and is now President and CEO, Trinity Health Michigan & Southeast Regions; the Honorable David E. Rutledge; longtime volunteer leaders and donors Wendy Holmes and Judy Johns; and Garry C. Faja (1947-2019), former President and CEO of St. Joe's.

A quote from Sister Yvonne Gellise, St. Joe's Senior Advisor for Governance, was printed on our *Renewal Campaign* wall and is a reminder to us all:

*"We are people caring for people and building these new towers – this new temple of healing – is the right thing to do today to ensure that we will be here tomorrow. What is important about tomorrow is that people will be presenting themselves to St. Joe's expecting to receive compassionate, excellent care and to be healed to the extent that they can be healed, or at least cared for lovingly. We have to continue on our Road to Renewal to make sure that we are here over the years ahead of us when people need us."*

The Mercy banner hung in the grand lobby is a reminder of our core values.



# Working Together for a Healthier Community

St. Joseph Mercy Livingston was honored to be chosen as a beneficiary of the 2021 Corrigan Oil Golf Outing, co-hosted by First National Bank and Mike Murphy, Livingston County Sheriff. Thanks to those leading the event and the many sponsors, St. Joe's received a portion of the proceeds that will support the hospital's greatest needs, including expanding urology services, to provide leading-edge, quality and compassionate care in Livingston County. We connected with key leaders for the event and at St. Joe's to gain their perspective on the importance of community partnerships:

"Corrigan has a commitment to the community we live in and St. Joe's is a large part of that community. This benefits our neighbors, customers, employees and our community as a whole," stated Tim Corrigan.

Livingston County Sheriff, Mike Murphy, shared, "Livingston County is built on relationships and community. St. Joe Livingston Hospital embodies and encourages both of these attributes. They are an outstanding partner and asset in many areas within the county."

"Having a local health care organization like St. Joe's based right here in Livingston County is invaluable. It goes beyond having quick, easy access to healthcare," stated Ron Long, President/CEO at First National Bank. "It means a partner in the overall wellness of our entire community. A partner in making our community a better place to live, work and enjoy."

"Our community has a history of coming together to address the needs of those who live and work in Livingston County. The gift made possible through the golf outing will help to address the hospital's greatest needs and build a stronger foundation for the future. Thank you to Mike and Tim Corrigan and the Corrigan Oil Company team, to Sheriff Mike Murphy, and to First National Bank – we are grateful for your steadfast support. And, thank you to those who supported St. Joe's by participating in this annual community event," said John O'Malley, FACHE, President, St. Joseph Mercy Livingston.



*To learn more about how your giving makes a difference at St. Joseph Mercy Livingston, please contact Lindsay Debolski in the St. Joe's Office of Development at 517-545-5151 or [Lindsay.Debolski@stjoeshealth.org](mailto:Lindsay.Debolski@stjoeshealth.org), or Melissa Sheppard, Director of Corporate and Foundation Relations, at 734-712-4079 or [Melissa.Sheppard@stjoeshealth.org](mailto:Melissa.Sheppard@stjoeshealth.org).*

**Or visit: [stjoeshealth.org/giving](https://stjoeshealth.org/giving)**

## Your lasting impact is reflected in a commitment to screening and early detection.

- In 2018, philanthropic support made it possible to open our new Breast Imaging Center of Excellence with services that continue to align with our oncology program. In addition to 3-D screening and diagnostic mammography, the new Breast Imaging Center offers breast ultrasound, stereotactic (X-ray guided) core biopsy, ultrasound guided core biopsy, excisional biopsy by a surgeon, and bone density.
- You have helped maintain our high standards of patient care, which are supported by our many nationally recognized accreditations. Our "triple crown" of quality accreditations include Breast Imaging Center of Excellence (ACR), Certified Quality Breast Center (NQMBC) and accreditation by the National Accreditation Program for Breast Centers (NAPBC). This means our patients have state-of-art, nationally recognized and compassionate care here in Livingston County.

"As the needs of our community continue to grow and we explore options for expanding our services, your continued support is vital to ongoing medical excellence, a healing environment and a remarkable patient experience," shared O'Malley. "We are truly grateful for your ongoing partnership as we look toward the future and our ability to provide Livingston County with leading edge cancer treatments and technology, innovative programs for personalized care, essentials for the underserved, and a world-class patient experience that is rooted in trust, compassion and hope."

*If you are interested in learning more about how your giving makes a difference at St. Joe's Livingston and St. Joe's Brighton, please contact Lindsay Debolski in the St. Joe's Office of Development at 517-545-5151 or [Lindsay.Debolski@stjoeshealth.org](mailto:Lindsay.Debolski@stjoeshealth.org), or Melissa Sheppard, Director of Corporate and Foundation Relations, at 734-712-4079 or [Melissa.Sheppard@stjoeshealth.org](mailto:Melissa.Sheppard@stjoeshealth.org). Or visit: [stjoeshealth.org/giving](http://stjoeshealth.org/giving)*

## Your Legacy

You can ensure the Remarkable Medicine, Remarkable Care that your family has counted on is available for future generations. Making a gift through your will or trust is a simple and meaningful way to leave your legacy.

Contact Jana McNair, Director of Major Gifts, 734-712-3919 or [Jana.McNair@stjoeshealth.org](mailto:Jana.McNair@stjoeshealth.org), or David Ripple, Regional Vice President for Development, SJMHS, at [David.Ripple@trinity-health.org](mailto:David.Ripple@trinity-health.org) for more information and allow us to recognize you as a member of one of our Legacy Societies. Or visit: [stjoeshealth.org/giving](http://stjoeshealth.org/giving)



**To learn more about how your giving makes an impact:**

**Vice President:**

**David Ripple** 734-712-0910  
David.Ripple@trinity-health.org

**St. Joe's Corporate and Foundation Relations:**

**Melissa Sheppard** 734-712-4079  
Melissa.Sheppard@stjoeshealth.org

**Ann Arbor: Jana McNair** 734-712-3919  
Jana.McNair@stjoeshealth.org

**Chelsea: Jennifer Maisch** 734-593-5373  
Jennifer.Maisch@stjoeshealth.org

**Livingston/Brighton:**

**Lindsay Debolski** 517-545-5151  
lindsay.debolski@stjoeshealth.org

**Oakland: Craig Peiser** 248-858-6142  
craig.peiser@stjoeshealth.org

**Jill Schubiner** 248-858-6146  
Jill.Schubiner@stjoeshealth.org

**Livonia: Karen Campbell** 734-655-2876  
karen.campbell@stjoeshealth.org

**St. Joe's Planned Giving:**

**Jana McNair** 734-712-3919  
Jana.McNair@stjoeshealth.org

**David Ripple** 734-712-0910  
David.Ripple@trinity-health.org

Please contact us at 1-855-257-1719 if you wish to have your name removed from lists used to send fund-raising requests supporting Saint Joseph Mercy Health System.

**EDITORIAL**

**EDITORS**

**David Ripple • Heather LaDuke**

**WRITERS**

**Heather LaDuke • Laura Blodgett**

**Bobby Maldonado**

**CREATIVE**

**PHOTOGRAPHY**

**Christopher Stranad**

**Anne Marilyn Tyler, RSM**

**Ben Weatherston**

**For more information, please contact us at:**

Office of Development  
Saint Joseph Mercy Health System  
5305 E. Huron River Drive, PO Box 995  
Ann Arbor, MI 48106-0995  
**Phone:** 734-712-4040  
**Fax:** 734-712-3730

[stjoeshealth.org/giving](http://stjoeshealth.org/giving)

**BeRemarkable.**



**OFFICE OF DEVELOPMENT**

5305 East Huron River Drive  
P.O. Box 995  
Ann Arbor, MI 48106-0995

Non-profit  
Organization  
U.S. Postage  
**PAID**  
Ann Arbor, MI  
Permit#130

## FastFacts

- St. Joe's congratulates Anurag Malani, MD, the Infectious Diseases Lead for COVID-19 Response, for being recognized by *Hour Detroit Magazine* with a 2021 Excellence in Care Award.
- St. Joseph Mercy Ann Arbor and St. Joseph Mercy Chelsea hospitals, members of Trinity Health Michigan, have been named to the Fortune/IBM Watson Health 100 Top Hospitals® list.
- St. Joseph Mercy Oakland and St. Mary Mercy Livonia have received Get With The Guidelines® - Stroke GOLD PLUS Awards from the American Heart Association for their commitment to ensuring stroke patients receive the most appropriate treatment according to nationally recognized, research-based guidelines.
- The College of Healthcare Information Management Executives (CHIME) announced that all Trinity Health Michigan hospitals have earned 2021 CHIME Digital Health "Most Wired" recognitions for effectively incorporating advanced technologies that improve health and care for our communities.

Scan this special QR code using the camera on your smartphone to visit our *Ways to Give* page, learn more about how your giving makes an impact on St. Joe's mission, and make your gift online today.

